



**Waterford  
News & Star**

# **Waterford Industries**

**Life Science, Technology  
& Manufacturing 2025**



# North Quays Public Infrastructure Project is one of the largest State projects in the country

It is almost two years to the day since former Taoiseach Leo Varadkar TD broke ground on the North Quays Public Infrastructure Project, marking the commencement of one of the largest State infrastructure projects outside of Dublin.

In those two years, the landscape of Waterford has changed dramatically.

The infrastructure works on the North Quays include a public transport hub that incorporates the relocation of Waterford train station to the North Quays and development of a sustainable transport bridge, that will link the North Quays to the city centre, via new walking and cycling infrastructure.

The river foundation works for the sustainable transport bridge are largely complete, and the manufacture of the steel bridge deck is ongoing in Belgium, with the six bridge deck sections due to arrive on site by the end of Q2 2025.

The Infrastructure Works in the vicinity of Dock Road, Fountain Street and Abbey Road will be completed in phases over the coming months and anyone who has been to Ferrybank in the last few months cannot fail to notice the impressive structure of the new train station building which is nearing completion.

A new flood defence and drainage system for the rail corridor has commenced, and this system will protect the existing and new rail infrastructure from the increasing impacts of flooding

and climate change, delivering future proofed and climate resilient commuter and freight rail services for Waterford City and Waterford Port.

The foundations have been laid for infrastructure that will further help consolidate Waterford as the economic driver of the Southeast, in particular in our tech, pharma, life sciences and manufacturing sectors that are robust and deep-rooted in Waterford.

In a recent regional local authority-commissioned survey, TechPulse, conducted by RIKON, the findings highlighted that the Southeast region is home to one of the country's most vibrant tech clusters, with an eclectic mix of established multinationals to new and agile start-ups the region represents a place of opportunity for business and investment.

Waterford's tech ecosystem offers diverse career development opportunities, from skill diversification and industry adaptability to continuous learning.

The Southeast region supports personal and professional growth, enabling employees to advance within the sector without needing to relocate.

There are approximately 6,000 tech professionals across an estimated 900 businesses.

Manufacturing, engineering and industrial technologies have long been the cornerstone of the regional economy, employing over



Sean McKeown Chief Executive Waterford City and County Council



31,000 people.

With a pool of multi-disciplinary and highly skilled workforce, Waterford is optimally placed for companies to leverage its distinctive location, connectivity and ease of access, and quality of life.

As home to one of the largest national clusters for life sciences, the sector supports over 10,000 employees and these companies are supported in their research and development by the presence of several Centres of Excellence, such as the Walton Institute, SEAM, PMBRC and ArcLabs, which use their industry knowledge and cutting-edge innovation to support high potential start-ups and cultivate local industry.

SETU also plays a pivotal role in providing a vital pipeline of academic talent to fuel our tech, pharma, life sciences and manufacturing sectors.

Its portfolio of graduate and undergraduate courses, spanning everything from business, computing, engineering, pharmacy & science and veterinary medicine accurately meets the needs of

these key industries.

SETU and Waterford City and County Council are also working closely on a number of collaborative projects, including a Smart Data Research Hub and the feasibility of a large-scale district heating project in the city.

Connectivity is key and while we await progress on the Programme for Government commitment to extend the runway at Waterford Airport, the potential for this to further boost tourism, promote business and encourage inward investment is immense.

Waterford has set out an extremely ambitious strategy in its Climate Action Plan 2024 - 2029, with Waterford City designated the Decarbonising Zone (DZ) for Waterford. Acting as a "Transition Super-Lab", where real life initiatives to manage the transition from a fossil fuel based local economy to carbon Net Zero will be designed and implemented, the DZ projects include building energy efficiency, sustainable transport, renewable energy generation and carbon seques-

## Waterford Ireland's Best Place To Live

Published by Waterford News and Star

Waterford's tech ecosystem offers diverse career development opportunities, from skill diversification and industry adaptability to continuous learning.

tration.

The establishment in the Southeast Regional Task Force is proving pivotal in maximising the strategic opportunity we have for off-shore wind, including supporting the Port of Waterford to ready itself to provide a base for renewable energy activity.

Investment in innovation and industry matched by investment in Waterford's economic, social and cultural development have copper fastened Waterford as Ireland's 'Best Place to Live'.

From housing provision to place-making, and sustainability to tourism, culture and community, our urban and rural centres serve as social, economic and cultural hubs and holistically serve to prompt investors and employers to Think Waterford First.

Under the Town Centre First, Town & Village Renewal, RRDF and URDF initiatives, our county will continue to diversify, grow and create unique experiences that draw more people into our city and towns.

What adds to the attractiveness of Waterford is its liveability. 94% of respondents to the TechPulse survey cited quality of life as good or very good, with education at 81% and the natu-

ral environment at 91%.

Regional residential rents are 21% below the national average and Waterford City rents are 22% below the regional city-averages.

Those looking to purchase would see a 10% and 27% comparative drop, respectively.

Waterford has been a trailblazer in the local authority sector for the use of the Repair and Lease, Buy and Renew and Croí Cónaithe schemes to bring over 600 vacant or derelict buildings back into use to date and a further 700 units at various stages of delivery pipeline through these schemes.

Waterford has outstanding natural assets, scenery and attractions from Ireland's oldest city to the UNESCO copper coast and the Council has maximised the use of the Urban Regeneration Development Fund (URDF) investment, to progress the vibrancy and vitality of the city.

As Ireland's Oldest City, Ireland's Best Place to Live and Condé Nast Traveller Magazine's Best Place to Go in the UK and Ireland, Waterford is striking the balance between being a city of historical significance and natural assets with economic potential and innovation to create a compelling setting where businesses can look to the future.

Think  
**Waterford**  
First

# For Business & Investment

### IF YOU'RE SETTING UP OR SCALING UP, THINK WATERFORD FIRST FOR BUSINESS AND INVESTMENT.

Waterford is rapidly transforming, which provides the opportunity for businesses to be part of that transformation.

Base your business in the city that was cited as 'the best place to live in Ireland' by The Irish Times, named 'one of the 52 places to go' by the New York Times and 'the best place to go in the UK and Ireland in 2024' by Condé Nast Traveller.

For investment support and advice on doing business in Waterford, visit [waterford2040.com](https://waterford2040.com) to learn how we can facilitate introductions to economic development agencies, private industry, academia and government.



Waterford

[waterford2040.com](https://waterford2040.com)



# Eirgen Pharma, A Waterford Success Story - 20 Years in the Making



Eirgen Pharma is celebrating 20 years since its establishment in Waterford. The company, which was founded in 2005 by Patsy Carney and Tom Brennan, has grown into a globally recognised centre of excellence in high-potency pharmaceutical development, manufacturing and packaging, with partners in over 60 countries.

Eirgen has been operating in Waterford since 2005, where it established its expertise in high-potency oral solid dose (OSD) medicines, specialising in oncology treatments and rare diseases. The company's rise has been nothing short of remarkable. Over the years, it has expanded its expertise, adding advanced manufacturing capabilities and a growing portfolio of pharmaceutical solutions for both human and veterinary medicine including, cardiovascular health, and immunodeficiency therapies. The company's commitment to innovation and quality, quickly positioned it as a trusted partner in the pharmaceutical industry, leading to its first U.S FDA approval within just a year

of its founding.

## A GLOBAL FOOTPRINT WITH LOCAL ROOTS

Eirgen Pharma has since expanded its global footprint, developing partnerships with major pharmaceutical companies and extending its reach into key international markets, including the United States, Japan, Australia, Canada, and the Middle East. The company is now recognized as a trusted contract development and manufacturing (CDMO) partner, specializing in high-containment drug formulation and advanced manufacturing technologies.

While Eirgen's influence spans across the globe, Waterford remains its home and operational hub. The company, now employing over 150 highly skilled professionals, has played a key role in developing local talent and fostering innovation within the region.

As part of its continued investment in Waterford and to meet the demands of an international dynamic market, Eirgen Pharma has announced the development of a new state-of-the-art

3,500m2 manufacturing facility at the IDA Industrial Estate, due to launch for commercialisation later this year. This expansion will increase production capacity, allowing the company to introduce pharmaceutical solutions while reinforcing its commitment to job creation and economic growth in the region.

"Waterford is where Eirgen was founded, and it remains the heart of our operations," said Damien Burke, CEO of Eirgen Pharma. "This latest investment reflects our long-term commitment to the region. By upgrading our facilities and expanding our capabilities, we are ensuring that Waterford continues to be a global leader in pharmaceutical innovation."

## A LEGACY OF INNOVATION AND EXCELLENCE

Eirgen Pharma's success has been driven by its focus on research, development, and technological advancement. The company has established itself as a specialist in high-containment drug development, working with cytotoxic and genotoxic formulations to produce life-changing medicines.

## ITS CUTTING-EDGE FACILITIES INCLUDE CLOSED-LOOP ISO

lators, powder containment booths, and advanced air filtration systems, ensuring the highest levels of safety, efficiency, and regulatory compliance. These innovations have positioned Eirgen as a preferred manufacturing partner for some of the world's largest pharmaceutical companies.

The company's growth was further accelerated in 2015 when it was acquired by OPKO Health, a Miami-based multinational health-



care company. This partnership has provided Eirgen with additional resources, expertise, and international networks, allowing it to scale its operations while maintaining its Waterford roots.

## A COMMITMENT BEYOND BUSINESS

Beyond its pharmaceutical achievements, Eirgen Pharma has remained committed to supporting the local community. Over the years, the company has been an active supporter of local charities and initiatives, recognising the importance of corporate social responsibility. Most recently, Eirgen donated €20,000 to the SOLAS Cancer Support Centre, a vital resource for individuals and families affected by cancer.

## LOOKING TO THE FUTURE

As Eirgen Pharma enters its third decade, it remains focused on innovation, expansion, and global impact. The company is committed to expanding its research and development efforts to deliver new pharmaceutical solutions, enhancing its manufacturing capabilities through continued investment in technology and infrastructure, strengthening global partnerships to improve patients' lives, growing its team, and creating high-value career opportunities in Waterford and beyond.

"The future of Eirgen Pharma is one of continued growth and innovation," says Damien Burke. "As we celebrate 20 years of success, we are more determined than ever to push the

boundaries of pharmaceutical development, improve patient health, and ensure that Waterford remains a centre of excellence in the industry."

With a solid foundation, commitment to excellence, and a clear vision for the future, Eirgen Pharma is poised to continue shaping the next generation of pharmaceutical development and manufacturing - right from the heart of Waterford.

**EIRGEN PHARMA**  
**WESTSIDE BUSINESS PARK**  
**OLD KILMEADEN ROAD**  
**WATERFORD.**  
**X91 YV67**  
**WWW.EIRGEN.COM**







Scan to learn more about [Eirgen Pharma](#)



## Achieve Excellence Together

Eirgen Pharma is a research-driven company specialising in the development, manufacturing, and distribution of end-to-end high-potency oral solid dose (OSD) medicines for human and veterinary use. We excel in providing specialty pharmaceutical solutions that prioritise quality, safety, and innovation. Become part of our vibrant team, where endless opportunities to learn, grow, and make a meaningful impact await. [Find your future at Eirgen.](#)



# Bausch + Lomb: Celebrating 45 Years of Growth

**BAUSCH + LOMB**  
See better. Live better.

This year, Bausch + Lomb is proud to celebrate a remarkable milestone: 45 years of operations in Waterford. From its modest beginnings in a portable building with just a handful of employees, the facility has grown into the largest Bausch + Lomb operation worldwide, employing 1,600 people. But behind this success story lies not just a tale of growth, but one of a community partnership and a shared journey of progress that has enriched both the company and Waterford.

## THE HEARTBEAT OF BAUSCH + LOMB: THE EMPLOYEES

At the core of Bausch + Lomb's success in Waterford lies its people—employees who have shown unmatched dedication, passion, and innovation over the years. What began with a small group in the early days has flourished into a dynamic and diverse workforce of 1,600 talented individuals who work tirelessly to manufacture products that change the lives of millions of people around the world.

Whether through advancements in vision care, medical devices, or eye health, it is the people of Waterford who have driven Bausch + Lomb's growth and success in Ireland and beyond.

The workforce in Waterford includes people from all walks of life, working in a range of departments, from engineering and operations to finance, and R&D. Their

collective commitment to excellence has shaped the Waterford facility into an international leader in the field of eye health. Employees here aren't just workers—they are innovators and problem-solvers, constantly striving for better solutions to complex challenges in healthcare and consumer products.

Over the years, the Waterford team has been integral to the design, manufacturing, and distribution of key Bausch + Lomb products. The employees at this facility have built a reputation for their exceptional skills, attention to detail, and commitment to quality. Their work has not only enhanced the company's reputation but has also helped improve the lives of millions globally.

The facility has also been a place of continuous learning and development. Bausch + Lomb has invested heavily in its employees, offering training programs, leadership development opportunities, and fostering a culture of innovation and collaboration. As a result, the company has nurtured a highly skilled workforce that contributes to the ongoing growth and success of the business.

Bausch + Lomb's commitment to its people has also had a ripple effect on the surrounding community. Many of the employees who started at the facility have built long-lasting careers within the company, often progressing through the

ranks. This culture of promoting from within not only strengthens the business but also contributes to the personal and professional growth of individuals within the Waterford region.

## WATERFORD: A PARTNERSHIP FOR GROWTH AND SUCCESS

Waterford has played a crucial role in Bausch + Lomb's growth story over the past 45 years. The city's vibrant community, welcoming atmosphere, and access to a talented workforce have made it an ideal location for Bausch + Lomb to build its largest global facility. In return, Bausch + Lomb's in-

vestment in the area has had a transformative effect on the local economy and society.

When Bausch + Lomb first arrived in Waterford in 1980, the company's headquarters was a modest portable building with just a few employees. Over the years, the facility has expanded both in size and scope, evolving into a global leader in the eye health sector. Today, the facility in Waterford is not only the largest Bausch + Lomb plant in the world but also one of the most technologically advanced, with cutting-edge manufacturing processes that pro-

duce products that reach customers across the globe.

The economic impact of Bausch + Lomb on Waterford has been profound. With 1,600 employees today, the company is one of the largest employers in the region, providing jobs to skilled workers in fields such as engineering, science, and manufacturing. The presence of Bausch + Lomb has helped foster a thriving local economy, with the company's investment driving growth in other sectors, including logistics, retail, and services.

Moreover, the impact of Bausch + Lomb extends far

beyond just the direct jobs created. The company has invested in various community initiatives and collaborations with local educational institutions to ensure that the region continues to have access to a pipeline of skilled talent. The company also has a strong record of supporting charitable causes, from local sports clubs to health and wellbeing programs, enhancing the social fabric of Waterford.

Over the decades Bausch + Lomb has worked in strong collaboration with the South East Technological University and many of





# With, Innovation, and Community in Waterford

the company employees have graduated from the various third level courses in the University. The company also maintains strong working relationships with the Local Authority, Waterford City & County Council as well as Waterford Chamber of Commerce.

The success of Bausch + Lomb in Waterford has also contributed to the city's reputation as a hub for innovation and manufacturing excellence. As one of the leading global manufacturers of vision and medical products, the company's presence in Waterford has helped attract other businesses and industries to the region. Over time, this has created a diverse and resilient economy, fostering an environment where local businesses can thrive and succeed.

## A SHARED FUTURE

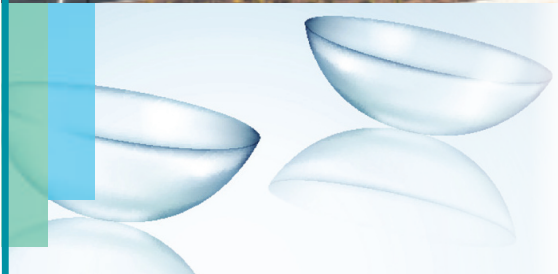
As Bausch + Lomb celebrates 45 years in Waterford, this partnership between the company and the local community has been a mutually beneficial one. The growth of the facility reflects not only the company's vision and

commitment to excellence but also the incredible talent and determination of the people of Waterford. Together, they have built something special—an enduring legacy of success, innovation, and community spirit.

Looking ahead, Bausch + Lomb remains committed to continuing its growth in Waterford, with plans to expand its product lines and invest in new technologies. The company is focused on further strengthening its relationships with local stakeholders and continuing to support the community through sustainable practices and ongoing investments in its people.

As the largest Bausch + Lomb facility worldwide, the Waterford operation will continue to play a pivotal role in the company's global success.

As we look forward to the next 45 years, Bausch + Lomb is proud to be a part of Waterford's story. Together, they will continue to shape the future of healthcare, making a difference for people around the world—one eye at a time.



# BAUSCH + LOMB™

See better. Live better.



# MAiTECH

## SALES & SERVICE

Maitech are the largest independent service and spare parts company in Ireland. When they first opened their doors in 1998, Maitech originally began serving only the Irish dairy industry. The demand for their services grew exponentially over the years, and they now provide support to the liquid foods, soft drinks, brewing, chemical, power generation, and pharmaceutical industries also.

Maitech are a one-stop shop for all their customers'

spare-part and servicing needs. They offer general maintenance services, process pump and valve servicing, integrity and holding time verification, refurbished process equipment, spare parts, and all types of new and used equipment.

Maitech's team of highly skilled engineers are on-hand for all equipment needs. Whether you are looking to proactively service your equipment, to repair an emergency breakdown, or to install new

equipment – Maitech are industry experts in all of these areas. Maitech's high-profile list of clients, which include Coca-Cola, Danone, Dairygold, Glanbia, Bausch & Lomb and MSD can attest to the reliability and knowledge-base of the company.

Maitech stock and distribute only the highest level of quality products, and host an ever-expanding list of brands. These include, but are certainly not limited to, Tetrapak, Alfa Laval, Niro Soavi and SPX.



Barry Nolan, Sales Co-Ordinator, Bob Dempsey, Finance Manager and Leonard Whelan, Operation Manager

Customers can rest assured that any new, used, or refurbished products they purchase through Maitech have been given the seal of approval by a company that deeply understands the needs of individual industries.

Maitech are main agents for Alfa Laval, BOS Homogenisers, Niro Soavi Homogenisers, Acram Aseptic Samplers, Definox & Ampco

Alfa Laval heat exchangers, pumps and valves can be purchased or serviced through Maitech. Maitech carry out all maintenance and over-haul on Alfa Laval heat exchangers, including regasketing, refurbishing, and cleaning in place of fouled units. Maitech also carry a large stock of genuine plates and gaskets for all replacement services.

BOS Homogenisers is a leading worldwide stockist of high-pressure pumps and homogenisers, and Maitech

is proud to be their Irish distributor. BOS offer high performance homogenisers with capacities of up to 44,000 litres/hour. BOS are well-known for their corrosion-resistant cylinder blocks, which they have been manufacturing for over 30 years.

Because of the extensive range of spare parts that BOS keep in stock for all their models, they are a popular choice throughout the world. Should a product ever require repair, it is easy to source the needed part in a timely manner.

Maitech keep a large stock of OEM spares Niro Soavi at their warehouse for next day delivery and have technicians available for service of the vast range of homogenisers and high-pressure pumps.

Acram Samplers are created specifically for the sampling of milk and dairy products. The samplers are automatic devices that will take a representative sample of

all milk transited. Maitech will provide the supplier with information such as pH and temperatures of the product, as well as the identification of the vehicle transported in. This allows for suppliers to efficiently control and collect data on the quality of their dairy product. With their emphasis on quality products, top-notch customer service, and industry knowledge; it is easy to see how Maitech stood the test of time and has been a thriving Waterford business for over 20 years. Maitech look forward to the challenges of developing alongside the industries they support.

Maitech are based in the IDA Business Park, Cork Road. They are contactable by phone on 051351897, or by email on enquiries@maitechservice.com.

For further information on the products and services Maitech offer visit their website, [www.maitechservice.com](http://www.maitechservice.com).



Pictured are Left Robin Walsh, Right Sebastian Tomczuk



Alfa Laval PHE



AMPCO Pump.



BOS Homogeniser





# JABIL

[www.jabil.com](http://www.jabil.com)

#### WHAT IS JABIL?

Jabil is a trusted partner for over 400 of the world's top brands, offering comprehensive engineering, manufacturing, and supply chain solutions. With nearly 60 years of experience across industries and a vast network of over 100 sites worldwide, Jabil combines global reach with local expertise to deliver both scalable and customized solutions.

Jabil's facility on the Cork Road in Waterford has helped some of the world's leading pharmaceutical

companies bring their products to market for the last 10 years – improving patient lives every day.

Employing over 400 people at its 200,000 square foot facility, it's Waterford site is further expanding its business and looking for talented people to join the team.

#### WHAT DOES JABIL DO IN WATERFORD?

With its ISO 13485 certification, Jabil's Waterford site offers tailored solutions

from concept to industrialization for medical products, including inhalable and injectable drug delivery devices. Jabil's world-class capabilities in tooling design, injection molding, quality control and assurance and manual to high-speed automated assembly, enable the company to cater for markets including diagnostics, consumer healthcare products, medical devices, and pharmaceutical delivery systems.

#### WHAT JABIL OFFERS

Employing 140,000+ people worldwide, a career at Jabil means opportunities to grow in any direction, innovate everywhere and be yourself.

Employees can create a career journey that fits their passion; and build relationships with peers and leaders who can help take their career to new heights.

To be the most advanced engineering and manufacturing solutions provider, diversity of ideas and solutions is a must at Jabil. When you join the Jabil team, the company will work to empower you, challenge you and encourage you to help make a difference.

For Jabil, our commitment extends beyond business success. At Jabil we make the world a better place with the way we treat each other, extend innovative solutions, and give back to our local communities. In 2024 Jabil employees globally volunteered over 500,000 hours to causes in their local communities.

If you want to MAKE ANYTHING POSSIBLE and EVERYTHING BETTER join the Jabil team in Waterford. Some of the benefits

employees can avail of include Wellness & Community Service Days, Study Support Scheme, Flexible Working, Attractive Shift Patterns, Sports & Social Club and an Employee Share Scheme.



Scan to learn more about [Jabil in Waterford](#)



JABIL



Explore a **World of Possibilities**

Jabil is one of the world's largest providers of healthcare design, engineering, supply chain, and manufacturing solutions. We collaborate with the world's leading healthcare brands to deliver advanced products and services that support optimal patient outcomes. [Join our growing team in Waterford.](#)

#### Apply to open opportunities across:

- Injection Moulding Technicians
- Automation Technicians
- Manufacturing
- Material Handlers
- Injection Moulding Engineers
- Technical Trainer Moulding
- Tooling Technician

Scan the QR code to explore our open roles  
[Apply Today!](#)





# Powering Waterford's Future: A Vision for Sustainable Growth

By Kevin Doolin, President of Waterford Chamber & Executive Director of the Walton Institute, SETU.

In the upcoming issue of Network magazine from Waterford Chamber, I explore the concept of the Circular Innovation Economy - a transformative model where renewable energy fuels innovation, and innovation, in turn, drives demand for more energy. This vision is not just about sustainability - it's about creating a self-reinforcing cycle of growth that can position Waterford and the South East as a leader in the green economy.

As President of Waterford Chamber and Executive Director of the Walton Institute, I've had the privilege of working with some of the most forward-thinking organisations and individuals in the region.

From Eastgate Engineering's cutting-edge work in wind-farms and renewable energy to Waterford Port's strategic role in supporting offshore wind development, the South East is home to a wealth of expertise and ambition. But to fully realise our potential, we need to think bigger, act bolder, and work together.

## A REGION READY FOR TRANSFORMATION

The South East is uniquely positioned to lead the charge in sustainable growth. With the recent designation of Maritime Area Plan (DMAP) zones for wind energy, we have a once-in-a-generation opportunity to harness the power of renewable energy on a massive scale.

But this isn't just about generating clean power - it's about creating an ecosystem where that energy fuels innovation, attracts investment, and creates high-quality jobs.

Our region is already home to world-class institutions like the South East Technological University (SETU) and the Walton Institute therein, which are driving research and innovation in areas like green tech, advanced manufacturing, digitalisation and renewable energy solutions. These institutions are not just educating the next generation of leaders; they're also partnering with industry to solve real-world challenges

and create new opportunities.

## MAPPING OUR STRENGTHS

One of my concerns, as noted in my first Network article, is that within Waterford we sometimes have a tendency to hide our collective light under a bushel. We have an incredible wealth of expertise and ambition, but we don't always showcase it effectively. To address this, Waterford Chamber is embarking on an exercise to map out thematic clusters of innovation across Waterford and the region.

This mapping exercise will help us identify and celebrate the strengths we already have, while also identifying areas where we can build and grow.

The first focus of this initiative will be on renewable energy and smart city technologies - two areas where the South East has significant potential to lead. By mapping these clusters, we can readily demonstrate the region's capabilities to investors, policymakers, and businesses, ensuring that



Kevin Doolin, President of Waterford Chamber and Executive Director of Walton Institute. Photo: Noel Browne

we capitalise on the opportunities ahead.

## COLLABORATION

At the heart of this vision is collaboration. Waterford Chamber and the Walton Institute are working closely with key stakeholders including Waterford City Council, Propelor BIC, and the Local Enterprise Office to map out a series of events and initiatives aimed at

pushing the innovation agenda forward. These efforts are designed to bring together industry, academia, and government to spark new ideas, foster collaboration, and ensure that the South East is ready to seize the opportunities ahead.

## SUPPORTING INNOVATION

To further support innovation in the region, Waterford Chamber, in conjunction with the Walton Institute, has launched a series of innovation-related webinars. These webinars are designed to equip local and regional businesses with the knowledge and tools they need to grow their in-house research and development capabilities.

The most recent webinar focused on the many available RD&I funding streams that businesses can leverage to drive innovation. From national grants to EU funding programs, there are numerous opportunities for businesses to access the resources they need to innovate and grow. These webinars are also a lead-up to our annual Toys4Engineers event, which brings together engineers, innovators, and industry leaders to showcase the latest technologies and ideas.

## THE ROADMAP AHEAD

*Realising this vision will require careful planning, investment, and collaboration. We need to focus on three key areas:*

1. **Infrastructure:** From high-speed digital connectivity to improved transport links and energy parks, infrastructure is the backbone of the Circular Innovation Economy. We must invest in the tools and technologies

that will enable industries to flourish and innovation to thrive.

2. **Skills and Training:** As new industries emerge, we need to ensure that our workforce has the skills and training to succeed. This means expanding our existing RD&I capacity and developing programs that prepare workers for the jobs of the future.

3. **Policy and Regulation:** Government must play a key role in facilitating investment and providing regulatory clarity. This includes streamlining approvals for wind energy projects and supporting the development of port and grid infrastructure.

## A CALL TO ACTION

The Circular Innovation Economy offers a roadmap for Waterford and the South East to achieve sustainable, long-term growth. But this vision will not become reality on its own. It requires action, collaboration, and a shared commitment to building a brighter future.

The upcoming DMAP auction and the push for Waterford Airport are critical opportunities to kick-start this process. But they're just the beginning. To fully realise the potential of the Circular Innovation Economy, we must act now - attracting innovative industries, building energy parks, and ensuring that the region is ready to harness the power of renewable energy.

The future of Waterford and the South East depends on our ability to embrace this cycle of growth, innovation, and sustainability. Together, we can power progress and create a brighter future for generations to come.

Let's make it happen.



Kevin Doolin, President of Waterford Chamber, speaking with David Brennan, Eastgate Engineering and Stephen Bull, CEO of Vargronn at the recent Off-Shore Wind Stakeholders meeting in Port of Waterford. Photo: Noel Browne





# Driving applied research in Waterford

Walton Institute is an internationally recognised ICT research institute, based at South East Technological University (SETU). ICS (Information and Communication Systems) Technology Gateway is the commercial interface of Walton Institute supporting start-ups, SMEs, and multinational organisations by delivering innovative ICT solutions. In partnership with Enterprise Ireland, it focuses on projects aligned with the needs of Irish industry.

ICS Technology Gateway specialises in areas such as Digital/Cloud Platforms, Data Analytics, Artificial Intelligence, Immersive Technologies (AR & VR), Future Networks, and the Internet of Things (IoT).

## UNIQUE LABS IN WATERFORD

Waterford is home to three cutting-edge labs, funded by the Enterprise Ireland Capital Call fund. These labs, along with others in satellite communications and quantum security, provide organisations right here in Waterford with access to advanced technologies that

can drive innovation in various sectors.

### Extended Reality (XR) Innovation Lab

The XR Innovation Lab bridges the gap between research and industry to create immersive solutions that redefine how we work and engage. The applications of this lab are vast:

**Healthcare:** Using simulations for medical training and enhancing patient care through XR visualizations.

**Manufacturing & Engineering:** Improving workflows with AR tools for maintenance and virtual prototyping.

**Education & Training:** Offering virtual labs and simulations for interactive learning.

**Retail & Marketing:** Enhancing customer experiences through AR product visualizations and virtual showrooms.

**Real Estate & Architecture:** Providing virtual property tours and 3D design reviews.

**Entertainment & Media:** Developing immersive games, VR films, and interactive storytelling.

### PRECISION IMAGING AND 3D MODELLING LAB

This lab, unique in Ireland, specializes in digital photogrammetry scanning—a method for capturing ultra-precise 3D spatial data. This technology is redefining the way we design, build, analyse, and innovate. It has wide applications, such as:

**Construction & Architecture:** Creating detailed 3D models of buildings for design, restoration, and monitoring.

**Manufacturing:** Streamlining product design and quality control with digital replicas.

**Cultural Heritage:** Digitising historical artifacts with high accuracy.

**Education:** Enabling immersive learning experiences with interactive and precise 3D models.

### SMART MATERIALS AND EXTILES INNOVATION LAB

Join forces with leading researchers to explore the limitless potential of electronic textiles—smart fabrics designed to revolutionize how we live, work, and



XR Innovation Lab at Walton Institute, SETU

innovate. This lab is unique as it brings together multidisciplinary expertise in textile science, electronics and analytics, to push the boundaries of what's possible with smart textiles. The lab's expertise covers:

**Healthcare:** Creating wearable devices to monitor vital signs, assist in rehabilitation, or support chronic condition management.

**Fashion:** Designing garments with embedded LEDs,

touch sensors, or temperature-regulating fabrics.

**Sports & Fitness:** Developing apparel to track performance and provide real-time feedback to athletes.

There are a number of funding opportunities available for businesses looking to work with the ICS Technology Gateway.

For more information or to explore ways the ICS Technology Gateway can

collaborate with your organisation, contact the team at [icstechgateway@waltoninstitute.ie](mailto:icstechgateway@waltoninstitute.ie).

To learn more about Walton Institute, visit [www.waltoninstitute.ie](http://www.waltoninstitute.ie).

*The ICS Technology Gateway is co-funded by the Government of Ireland and the European Union through the ERDF Southern, Eastern & Midland Regional Programme 2021-27.*

WWW.WALTONINSTITUTE.IE

## Innovation Webinar Series

IN COLLABORATION WITH WATERFORD CHAMBER AND TOYS4ENGINEERS

Hosted by Walton Institute at SETU, this FREE lunchtime webinar series is designed to highlight useful tools, funding mechanisms and technologies companies could use to advance their digital innovation journey.



Register for the next webinar

### Dates for your diary

22nd Jan	Unlock Funding: 30 mechanisms for industry
26th Feb	ChatGPT: A Tutorial
7th April	ENTIRE European Digital Innovation Hub
11th June	AI for Business
TBC Sept	Technology Gateways
TBC Nov	XR for Industry

For more information email [info@waltoninstitute.ie](mailto:info@waltoninstitute.ie)



Walton Institute, SETU located in SETU West Campus, Carriganore.



# Waterford Chamber Business & Innovation Expo open to all

The Waterford Chamber-BusinessExpo, which takes place on Thursday, April 3rd in Bolands Mini and BMW showrooms on the Cork Road, is set to bring the business community together to showcase their latest innovations, network and do business.

Sponsored by Waterford Local Enterprise Office, the Expo will have a number of interesting features – WLR will be broadcasting live, delicious treats will be provided by Musgrave Marketplace, businesses are going all out with their displays and there will be plenty of surprises, giveaways and spot prizes along the way!

## NEW INNOVATION ZONE

A new element is The Innovation Zone, which will be hosted by Walton Institute, SETU, serving as a dynamic hub for local businesses to explore cutting-edge technologies and trends across key sectors such as energy, health, tourism, agriculture, AI, transport and future networks.

This addition to the annual event will showcase the latest innovations, offering businesses hands-on demonstrations and networking



Jacqui Gaule and Jamie Whitty, Waterford Local Enterprise Office, sponsors of the Business Expo.

opportunities to learn how they can integrate these advancements into their operations. By connecting local

enterprises with emerging technologies, the innovation zone aims to inspire new ideas, foster collaboration,

and unlock opportunities for growth in these critical areas of innovation. In addition, private appointments

will be available for businesses to learn how they can access funding and adopt new technologies and inno-

ventions to enhance their business offering.

Speaking about the event, Gerald Hurley, CEO Waterford Chamber said: "This event will be bursting with positivity and Bolands is the perfect location for people to pop in and have a look around.

There will be plenty of parking available and all businesses are encouraged to come along and network, whether they are exhibiting or not. There's no sitting down allowed – it's all about seeing the incredible innovations out there in our business community, learn how you can grow your business with funding opportunities, meeting new people, and enjoying an afternoon away from the office." Gareth Evans, Waterford Local Enterprise Office, said: "We are delighted to be associated with this event and look forward to connecting with the business community. It goes to the very heart of what Waterford Local Enterprise Office is about, working with our businesspeers to create a better, safer and more successful working environment."

**THE BUSINESS EXPO IS OPEN TO BOTH CHAMBER MEMBERS AND NON-MEMBERS. TO BOOK YOUR STAND, PLEASE GO TO [WWW.WATERFORDCHAMBER.IE/EVENTS](http://WWW.WATERFORDCHAMBER.IE/EVENTS) OR SIMPLY STOP BY ON THE DAY TO SAY HELLO.**



Lorraine Shanahan and Lisa Moran, Musgrave Marketplace, enjoying the Business Expo.

"We are delighted to be associated with this event and look forward to connecting with the business community. It goes to the very heart of what Waterford Local Enterprise Office is about, working with our businesspeers to create a better, safer and more successful working environment."



# Toys4Engineers Expands for 2025 with Year-Round Events

Toys4Engineers is set for its most exciting year yet in 2025, evolving into a comprehensive, year-round initiative designed to inspire, educate, and connect professionals across the engineering and technology sectors. This expanded program now features a series of monthly webinars and hands-on workshops, offering valuable insights and skills development in the lead-up to the highly anticipated Toys4Engineers Conference & Expo.

The flagship event will return to SETU Arena on October 2, 2025, where companies from across Ireland will come together to showcase cutting-edge innovations and breakthrough technologies. With a dynamic mix of expert-led sessions, networking opportunities, and interactive exhibits, Toys4Engineers 2025 promises to be the ultimate hub for industry leaders, entrepreneurs, and tech enthusiasts.

Toys4Engineers, organised by Waterford Chamber in partnership with Engineering the South East, is supported by Waterford City & County Council, South East Technological University, Enterprise Ireland, IDA Ireland, Waterford Local Enterprise Office, Waterford Chamber Skillnet, Cobotics Skillnet, Engineers Ireland, and Business in the Community Ireland.

Over the years, the event has grown from strength to strength, earning its reputation as a premier national gathering. Now recognized as a must-attend event, Toys4Engineers attracts re-

nowned international conference speakers and fosters meaningful business connections, making it a key fixture in Ireland's engineering and technology landscape.

To enhance the offering further, Waterford Chamber has partnered with the Walton Institute to run a series of webinars focusing on pertinent topics in terms of innovation, including funding, AI and Chat GPT, among others. These are all free to attend and available to anyone in business. The event website [www.toys4engineers.ie](http://www.toys4engineers.ie) is also being developed to offer a full calendar of events key to innovation in the region, as well as industry news and training opportunities.

All roads then lead to SETU Arena in October, where Toys4Engineers is the ultimate playground for tech lovers and for anyone in Engineering, Tech, Pharma, Biomed, Agri-Food, Manufacturing, Construction and Renewable Energy industries or anyone with an interest in new and emerging technologies.

THE MAIN EVENT The Expo will feature over 100 stands, from cutting edge start-ups to multi-nationals, giving businesses the opportunity to exchange information, connect with like-minded individuals, network and explore business opportunities. There will also be an outdoor expo, which will present the very latest in plant machinery, heavy equipment and electric vehicles. In addition, there will be informative and engaging panel discussions from industry leaders and above all, you

can come along and play with all the Toys!

There will also be opportunities for companies to 'Meet the Buyer' – designed to bring together multinational and indigenous companies to do business, it is the perfect opportunity for busy people to make the best use of their time. Meetings are ten minutes in duration, with no obligation. These meetings have proved extremely valuable in recent years, with a number of contracts being secured and long-lasting partnerships formed.

DOING BUSINESS Gerald Hurley, CEO Waterford Chamber said: "The amount of business done at last year's event was heartening with plenty of promises of follow-up meetings and of course we had over 80 meetings during our Meet the Buyer offering. At the end of the day, as a Chamber our main goal here is to bring businesses together to generate sales leads and make new contacts.

"Our conference will inform and inspire and focus very much on innovation, our theme for this year. We are working with stakeholders to showcase the region in terms of the strength of innovation and Toys4Engineers presents the very essence of that." Toys4Engineers is free to attend, while a nominal fee applies for exhibitors. An 'early bird' discount is available for exhibition stands booked before 30th April 2025. To book a stand, please contact [lynda.lawton@waterfordchamber.ie](mailto:lynda.lawton@waterfordchamber.ie) or for more information see [www.toys4engineers.ie](http://www.toys4engineers.ie)



Kevin Doolin, President Waterford Chamber, trying out VR at Toys4Engineers Expo in SETU Arena.



James Doyle from Eirdrone Services chatting with Yuriy Rezvyi and Marek Schaumkese.

## TOYS FOR ENGINEERS

**02 OCT 2025** **SETU ARENA**  
1:00 PM – 7:00 PM WATERFORD CITY

[www.toys4engineers.ie](http://www.toys4engineers.ie)

Waterford Chamber  
Engineering the south east  
SETU  
Waterford Chamber Skillnet  
Cork City & County Council  
Local Enterprise Office  
IDA Ireland  
Enterprise Ireland  
ENGINEERS IRELAND  
BUSINESS IN THE COMMUNITY



# Industries Biggest Brands sourcing a competitive advantage in Waterford



Caterpillar, JCB, Volvo CE, Manitou, Liebherr, Vertiv, Hellermann Tyton and HIAB are just some of the household brands currently being supplied by Waterford business Keltech. The company now lay claim to the enviable fact they supply 7 out of the top 10 OEM's in the world from the their state of the art facility at the cities IDA Industrial Park.

Over the past 10 years the innovative firm have transformed their operating model and in the process now have major accounts with OEMs in Ireland, the UK, North America and Mainland Europe. **Seamus Lawlor Director of Business Development.** "A decade ago our customers were predominantly Irish with a couple sprinkled across the UK.

At that time we were classed as a general fabricator with a -if its metal, we can make it- mantra. We recognized that wasn't going to be sustainable, we were a bottom feeder in a fiercely competitive environment

where price was king." Keltech repositioned the sales strategy in the mid 2010's and quickly gained traction. "We looked inward first, identifying key strengths and a niche product portfolio that could be manipulated and turned into a strategy. We went tunnel vision; we ignored hundreds of sales leads that we would of usually chased and instead targeted potential high value clients with targeted pitches."

The strategy worked and by 2020 with a strong customer base in situ and many promising opportunities in the pipeline Keltech turned their attention to developing a world class facility that could support their next gear change. **Keltech 4.0 Manufacturing.** Last September, following a 5 year tailored investment programme, Keltech completed its multi-million-euro transformation of its headquarters in Waterford city.

"This is a game changer for existing and potential clients, it offers the market



Seamus Lawlor Director Of Business Development. Pic Sean Curtin True Media.



unrivalled capacity potential, Keltech has almost doubled its manufacturing footprint under one roof.

In doing so we have also

invested heavily in the key processes of: cutting, bending, welding and painting." Investments in the latest cutting and bending tech-

nology has enabled Keltech to process much more sheet steel tonnage while the investment strategy in welding and painting will pro-







Gerard Grace, 2nd year Apprentice



vide the company with the market edge, as Seamus explained.

"Welding is one of industry's biggest bottlenecks at the moment. The newest section of our K3 plant (occupying 40,000 square feet) is now fully operational with the sole purpose of creating world class welding capacity. The section houses our Advanced Robotic Welding Technology. Three brand new Valk robotic welding centres have been commissioned with a forth to follow." K3 also provides Keltech's certified welders with the ideal environment to carry out their craft via state-of-the-art air-fed weld PPE, lifting equipment, hall extraction and Fronius pulse welding plants.

In addition, the onsite purpose-built Double Layer Powder Paint Plant is a source of great pride for Keltech. The newly commissioned plant is one of the most innovative coating solutions available on the market, its provides unrivalled corrosion resistance when applied to parts.. "When I talk to customers the message is very simple: 'Our Paint, Your Brand'. Paint is almost always the top priority for customers, this investment firmly cements our position as market leaders."



## Keltech's Award Winning Apprenticeship scheme

Keltech's talented employees are the heartbeat of recent success. Seamus continues "despite the investment in the latest cutting edge technology its still the people that make a company like ours a success or not. Our apprenticeship scheme has been a cornerstone" "We are into our 6th year of running the programme and its been a huge success. Last year our first year apprentice Leah Murphy was crowned

National Welding Champion, the first female winner ever. Leah now goes on to represent Ireland this year at the World Skills finals, a testament to Leah and our trainers here in Keltech. Niall Madden our very first Metal Fabrication Apprentice (now fully qualified) has just progressed into a very senior role within our operations". The feedback from Keltech's Apprentices is its an opportunity like no other, Gerard Grace 2nd

year apprentice " You are learning your trade in a top class environment here in Keltech. There is no cold and wet sites with this apprenticeship.

You are 50% of time here at the factory getting the opportunity to work on amazing projects with a great team for the likes of JCB and Caterpillar and 50% of the time at college.

At the end of the 4 years ill have a qualification were there will always be inter-

esting well paid work available. Keltech is on my doorstep, I came straight from secondary school, college wasn't for me, id really recommend it to anyone.

Keltech are now accepting applications for their award winning **4 year QQI Level 6 Metal Fabrication Apprenticeship programme.**

■ Interested in a Metal Fabrication Apprenticeship? CV and Cover letter to [careers@keltech.ie](mailto:careers@keltech.ie)





# CARTEN CONTROLS - Evolving to Revo



# CARTEN

FLOW SOLUTIONS - **WE GO BEYOND**

Since opening at the Waterford site on the Northern Extension of the IDA Industrial Estate in 1981 as a 'low purity' brass valve manufacturer, Carten Controls has strived to provide state of the art manufacturing to the semi-conductor bulk gas transfer market. This was realised over time with a transition to high and ultra-high purity stainless steel product and ongoing site investment in modern manu-

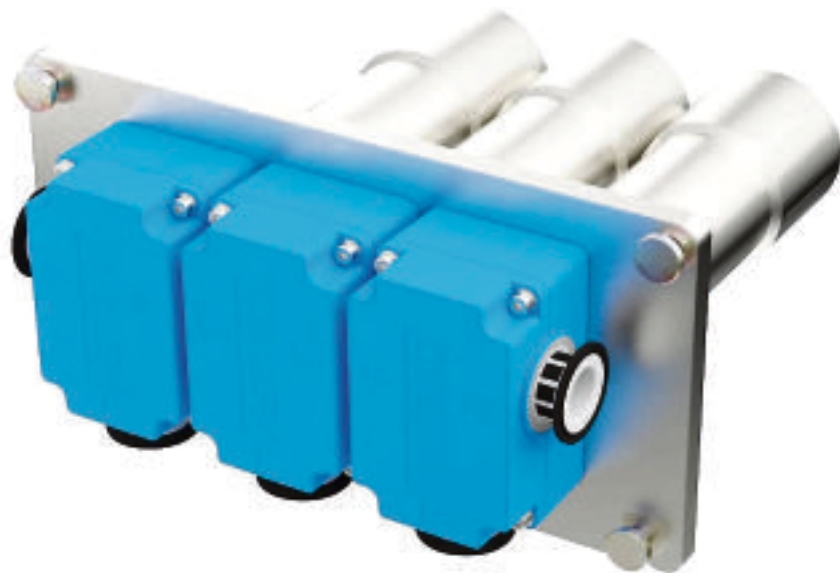
facturing facilities. In the early 2010's Carten introduced a manufacturing facility for simple and complex integrated flow solutions including gas sticks, panels, valve-manifold boxes and complex gas mixing systems. In the mid 2010's Carten entered the pharmaceutical market with the release of the BNW valve and block series. This is a market leading, patented, high performance

weir diaphragm valve.

While its primary usage is within fixed, stainless steel, systems the, ASME BPE compliant, BNW series is the first demonstration of Carten's commitment to open architecture principles within the pharmaceutical sector and is compatible with sensing and control solutions from a variety of third-parties while offering multiple integration solutions on the customer site.



Omnia Fluid Transfer Module



Omnia Pinch Block



# Revolutionise the Pharmaceuticals Sector



enable algorithmic predictive maintenance. This collaborative project combines skills in design, manufacturing, and sensing at Carten with knowledge of Artificial Intelligence application, sensor signal conditioning, and cloud solutions at Walton Institute.

The body of research undertaken by ICS Technology Gateway at Walton Institute and part funded by an Enterprise Ireland Innovation Partnership Program will revolutionise the maintenance functions within traditional pharmaceutical manufacturing through the reduction in the need for specified annual maintenance while giving the operations and maintenance teams the tools they need to ensure the safety and integrity of each batch produced. With batch values typical in the millions of euros the importance of this cannot be understated. This new technology platform will reduce ongoing operating expenses for users through removing interventions at valves that do not require maintenance and optimising maintenance intervals across the install base. In the long term this may shorten or remove shutdown periods that are typical today.

To ensure the highest standard of cleanliness these valves are assembled, tested, and packaged in our modern, energy efficient, ISO 4 clean room. This facility allows no particles that are 10 times smaller than a grain of sand within the clean space and ensures Carten is prepared to serve industry capacity and technology demand for the next 25 years.

For the next evolution of this valve series Carten are working closely with Walton Institute at South East Technological University (SETU) to develop a real time condition monitoring system to

mini-pinch valve to small volume, low flow applications. The Omnia mini-pinch valve enables the efficient production of today's most advanced cell and gene therapies and is crucial in the furthering of cancer and rare disease treatments.

In 2025 Carten is expanding the Omnia range to include two new product lines. The first of these is a new "pinch-block" model which is designed to offer significant improvement in batch-to-batch times for biopharmaceutical manufacturers with simplified installation and reduced risk to batch integrity through removal of common connection points. The pinch block complements and leverages the technology already released with Carten's Omnia Actuators while reducing space requirements by 30% hold up volume by up to 50% compared to conventional installations.

The second addition to the Omnia range in 2025 is the release of standard and custom integrated systems. These integrated systems use the well-known, high performance, Omnia Actuator technology and adds a layer of programmable control hardware to produce flexible automated solutions for the biopharmaceutical industry. While

these integrated systems are primarily used as fluid transfer modules Carten can customise a system to meet user requirements and act as a single point of contact for the entire project to produce a solution with integrated valves, control electronics, and flow kit.

The relevance of ASME BPE standards in Carten's operations cannot be overstated. The ASME BPE (Bio-processing Equipment) standards provide comprehensive guidelines for the design and construction of equipment used in the biopharmaceutical industry, ensuring high levels of purity and bioburden control. These standards cover materials, design, fabrication, inspections, testing, and certification. By adhering to ASME BPE standards, Carten ensures that its products meet the stringent requirements of the biopharmaceutical industry, enhancing product purity and safety while complying with regulatory standards.

Carten's adherence to these high standards and innovative pipeline of solutions for the biopharmaceutical industry saw recognition in late 2024 with the prestigious award of Life Sciences Exporter of the Year from the Export Industry Awards facilitated by the

Irish Exporters Association.

Carten takes pride in the ability to offer engineer to order products which are fully customised to suit a user's needs and whether it is the mixing of highly toxic and explosive gases in semiconductor, or the fluid transfer of life-saving therapeutic biologics for injection into the human body in bioprocessing, Carten product is marketed, researched, designed, validated, and

manufactured at our site in Waterford. Carten proudly works with our sub-suppliers of machined components across Ireland and works to ensure we source as much product within Ireland as possible - both to reduce the impact of global supply chain logistics on the environment and to positively contribute to the Irish economy through supporting local employment of highly skilled workers.



Omnia Pinch Block



Omnia Pinch Valve Series



# Waterford's Bright Future: Building on the county's growth mission

Waterford is on the rise. As Ireland's oldest and fifth largest city, Waterford is stepping into the future with a clear vision: to be the best place to live, work, and visit. The Waterford City and County Development Plan 2022-2028 is a transformative roadmap designed to ensure the region's continued prosperity, sustainability, and vibrancy.

Adopted by Waterford City and County Council in 2022, this comprehensive strategy sets out ambitious goals to drive economic expansion, improve housing, enhance infrastructure, and protect the environment. The plan is more than just policy—it is a commitment to progress, ensuring that Waterford becomes a beacon of modern development while preserving its rich history and heritage.

At the heart of the Waterford City and County Development Plan is a simple yet powerful goal: to shape a city and county that is

thriving, inclusive, and future focused. The council has worked tirelessly to create a strategy that will not only benefit today's residents and businesses but also lay a strong foundation for generations to come.

This ensures that Waterford plays a key role in national and regional development, Waterford City and County, to be on course to reach a respective population of 87,000 and 181,000 by 2040.

A strong economy is the backbone of a thriving community, and Waterford is making sure businesses have the support they need to flourish.

The council has prioritized investment in local enterprises, the attraction of foreign direct investment (FDI), and the development of key sectors such as technology, tourism, and manufacturing.

By fostering a business-friendly environment and investing in infrastructure, Waterford is positioning

itself as a top destination for innovation and entrepreneurship. The plan also recognizes the vital role of small and medium-sized enterprises (SMEs), ensuring that local businesses have the resources and opportunities to grow.

Built on strong public engagement, the plan is based on 1,000 public submissions were received during the consultation process, reflecting the passion and commitment of Waterford's people.

The council actively listened to feedback from residents, businesses, and community groups, ensuring that the final strategy reflects real local needs and aspirations.

Employment and economic growth are crucial to the planning system in achieving sustainable goals for the public good, enhancing social and economic opportunities for all residents, and strengthening the economic resilience of our city and county.

For Waterford to thrive as a resilient and sustainable hub, the council argued that the region must be seen to be "open for business," accommodating the evolving needs and location requirements of businesses across various sectors and sizes.

This vision demands a focused, coordinated, and collaborative effort across sectors and departments, ensuring targeted initiatives with a strategic approach. A proactive land management strategy, including well-positioned brownfield and greenfield land banks, is essential for driving economic growth and development.

To foster a diverse and resilient economy, we must leverage our existing natural, cultural, and built assets while integrating innovative ideas from our colleges, research institutions, and skilled workforce.

Additionally, enhancing connectivity through transport infrastructure up-

grades and high-speed digital networks, alongside a proactive transition to a low-carbon economy, will further support sustainable economic progress.

## THE COUNCIL'S PLAN COMMITS TO DOING THIS BY:

- Setting out a planning framework for economic development that is in line with the plan hierarchy, settlement hierarchy and Development Plan Core Strategy and supports communities across Waterford.

- Ensuring an adequate supply of zoned and serviced land for economic and employment-generating uses and growth at appropriate locations.

- Developing a strategy for retail and tourism/ leisure

- Promoting and facilitating an improvement in the quality of life in all parts of the City and County.

- Supporting the provision of education facilities and the knowledge economy in order to assist in fostering a culture of innovation, life-long learning and life skills.

- Facilitating and supporting entrepreneurial activity and clustering opportunities.

- Supporting sustainable employment growth around Waterford's natural resources.

- Supporting key sectors for growth, including those at strategic transport/ access locations.

- Provide a consistent approach to economic development that in turn generates certainty and clarity for applicants, developers and investors involved in the development process; and

- Provision of a framework of development management standards to promote best practice implementation of development in order to ensure and contribute towards a sustainable and high-quality environment.

The council's goals of economic growth and development for the Déise are underpinned by four priorities:

- Investing in our people and our infrastructure in a sustainable way.

- Fostering a culture of innovation, research and development.

- Promoting inclusive growth and creating opportunity through local and regional cohesion; and,

- Promoting integrated connectivity to boost our collaborations, trade and investment, health and well-being.

These growth missions are set to be enabled by the council's aspirations to improve interconnectivity in the south east.

In the council's development plan, they aspire to achieve a sustainable, integrated low carbon transport system with excellent connectivity within and to Waterford, as well as making efficient use of transport networks and ensure that all new developments contribute towards reducing the need to travel long distances and encourage people to walk, cycle or use public transport.



City Hall



# Haleon - Headed for sustainability

# HALEON



Haleon is a world-leading consumer health company with a clear purpose to deliver better everyday health with humanity. Their leading brands are built on science, innovation and human understanding and are trusted by millions of consumers globally.

Haleon is positioned to play a vital role for people all around the world.

The Dungarvan site is one of the largest in the Haleon network and produces well-known brands including Panadol and Polident.

The site recently an-

nounced it has achieved its carbon neutrality sustainability target at the end of 2024. This milestone underscores the company's commitment to environmental stewardship and sustainable business practices. Reaching this milestone and contributes to Haleon's global goal to reduce net Scope 1&2 carbon emissions by 100% by 2030 vs. a 2020 baseline, supported by a 95% absolute reduction target.

This achievement was made possible through several initiatives, including use of a Biomass boiler

which has been certified to comply with Carbon Neutral Standards, and collaborative efforts with suppliers such as SSE Airtricity, which will provide guarantee of origin for renewable electricity used at the site.

Haleon Dungarvan remains dedicated to furthering its sustainability initiatives and is currently engaging with the Alliance for Water Stewardship to take the actions needed to achieve AWS certification for responsible water stewardship at the site. The Al-

liance for Water Stewardship standard drives, recognizes and rewards good water stewardship performance. Certification will contribute to Haleon's global goal for all sites to achieve AWS standard certification by end 2025.

"We are incredibly proud to announce that we have achieved our carbon neutrality target. This accomplishment reflects our team's hard work, dedication, and innovative spirit. We believe that sustainable practices are not

only good for the environment, but also essential for the long-term success of our business," said Sarabjit Paul, Site Director.

This is just the beginning of our journey towards sustainability.

Haleon is committed to continuous improvement and innovation in our sustainability practices. We will continue to explore new technologies and partnerships to further reduce our environmental impact, tackle waste and contribute to a healthier planet.

Haleon Dungarvan has current open positions in Quality, Engineering, Manufacturing and Technology.

■ For further information on Haleon, you can visit their website -[www.haleon.com](http://www.haleon.com) where you can learn about the company and its sustainability initiatives while also viewing the latest job opportunities.





# 'Disappointing' timeline for Waterford wind farm



Managing Director of Energia Renewables, Peter Baillie. Photo: Hugh Dooley

Hugh Dooley

The likely five-year wait to begin construction at the 'Tonn Nua' offshore wind site in Waterford has been described as "disappointing" by the Managing Director of Energia Renewables, Peter Baillie, ahead of the state auction in June. He has called on the government to fast track the development timeline.

The "Tonn Nua" site, 12 kilometres off the Waterford coast, will be the State's second auction under its offshore renewable electricity support scheme (ORESS). It is set to deliver 900 megawatts (MW) of renewable energy, saving 1.8 million tonnes of carbon emissions each year after construction.

Minister for Energy Eamon Ryan said on the announcement of the auction that he expected the winning wind farm would become operational by 2032, if not quicker.

The auction is set to begin in June with a decision expected by prospective bidders to be announced in July.

The winning bidder for the Tonn Nua site will be required to provide a €140 million local benefit fund, €7 million per year of the wind farm's expected operation.

Speaking to regional stakeholders at an Offshore Wind conference at Waterford Port, Energia Renewables outlined their intention to bid in the auction to deliver the Tonn Nua wind farm site alongside Vårgrønn – a Norwegian-Italian renewable energy joint venture between Plenitude and HiTech Vision – which is involved in the delivery of a series of offshore wind farms in Northern Europe.



An image of a similar offshore wind farm in Germany called Borkum Riffgrund 1, showing platforms such as the one in the image as enabling works. Photo: iStock

"Energia and Vårgrønn have done the most work, we are the most informed bidders in this auction," Baillie said.

"We have a uniquely comprehensive understanding of the offshore environment off the southeast coast, and we can deliver the Tonn Nua wind farm faster than our competitors if successful in our bid."

The Chief Executive of Waterford City and County Council, Sean McKeown told the conference that he is aware of "at least two consortiums" preparing bids for the Tonn Nua auction later this year.

Mr Baillie told the Waterford News & Star that there will be a delay of "up to five years" before construction can begin at Tonn Nua following the auction process.

"There were opportunities to fast-track that, so it is disappointing that we could be five years waiting."

Mr Baillie said that the "disappointing" delay before construction, which is

subject to determination from EirGrid, is "a product of the policy and move to a plan-lead approach, and we would welcome engagement with the new government on opportunities to accelerate this timeline."

Baillie called on the government to address the "urgent need" to develop a "credible pipeline of projects for developers and the supply chain to see a real opportunity" in order to attract and give confidence to potential investors including a "substantial investment" into the country's ports.

He said that a lack of confidence for investors through a lack of "realistic plans for energy grid capacity" is causing "a risk that the momentum in Ireland for the Tonn Nua auction will quickly fall away".

In light of Storm Eowyn and other weather events, Baillie said it is an "increasingly challenging environment" to operate in, noting that the recent storm had





and. EirGrid is seeking to build offshore

## Port Chief: 'One project will not make an industry'

seen consistent wind speeds above 150km/h.

"We have done our homework," Baillie said, noting Energia has installed numerous sensors in the designated area to inform their bid through the collection of "amazing data on the site conditions".

The first ORESS-1 auction procured more than 3 gigawatts (GW) of capacity from four offshore wind projects – enough to power 2.5 million Irish homes at an average of €86.05/megawatt hour.

The Tonn Nua auction will be the first under the State's first spatial plan for offshore renewable development, specifically the south coast designated maritime area plan (D-map).

It identifies four areas off the Wexford and Waterford coast for development over the next decade.

The four proposed zones off the south east coasts of Waterford and Wexford are Tonn Nua, Li Ban, Manannán and Danu.

### Hugh Dooley

The CEO of the Port of Waterford has warned that investment in the regional ports is necessary for the financial benefits of the Tonn Nua offshore wind farm to be realised in the south east.

"If the offshore wind-farms get built, but they are not built from Irish ports, the regional economic benefits will be realised across British ports," said David Sinnott, Chief Executive of the Port of Waterford, "One project will not make an industry."

Speaking to regional stakeholders at an Offshore Wind conference at Waterford Port, Mr Sinnott said that the Port of Waterford was celebrating its 1,111th year in operation this year and that the port "intends to make 2025 a memorable year" for offshore wind.

Mr Sinnott said that for the "first 900 years" of the

port's history it had been "the economic driver of the city" before settling into a role in support of the farming and agri-business industries in recent years. The port chief said that the port was well-positioned to once again play "a big role in driving the economy" for the region with regard to offshore wind.

The port is planning its future with serious consideration to the offshore wind energy industry, Mr Sinnott said, "We expect to be an operations and maintenance base, but we also expect to be able to offer support during the construction phase of wind farms."

The President of Waterford Chamber, Kevin Doolin said that "2025 has the potential to be a pivotal year for offshore wind in Ireland, particularly for the South East. "We stand at the brink of a transformative era, but as highlighted by today's contributors, realizing this potential requires urgent

government action. Investment in port infrastructure, expansion of grid capacity, streamlined planning, and the development of a skilled workforce are critical to unlocking Ireland's offshore wind opportunities."

Doolin called for a "clear roadmap for future auctions and a well-structured pipeline of plan-led projects" in order to attract investment by "bolstering developer confidence, and driving economic growth in the region."

"This is our moment to move from the periphery to the forefront of Ireland's renewable energy future," he said, "Waterford Chamber has done extensive work in terms of lobbying for offshore wind, we understand the opportunities and the far-reaching benefits it will have for our region."

Doolin said that the "development of offshore wind energy projects in the South East" will provide substantial opportunities for local

businesses, workers and communities. "From the creation of high-quality jobs in construction, operation, and maintenance to the establishment of a local supply chain, the offshore wind sector will provide a foundation for long-term economic resilience in the region."

Doolin highlighted the positive impacts of offshore wind projects on "significantly reduce[ing] carbon emissions, helping Ireland meet its renewable energy targets and play a leadership role in the global fight against climate change."

"We are excited to see companies like Energia and Vargronn leading the way, and we fully support the continued development of this sector in our region," he said, "Not only will these projects help meet Ireland's energy needs, but they will also position the South East as a centre of excellence in the green energy transition."



Port of Waterford CEO David Sinnott. Photo: Patrick Browne



# Waterford-based NEG8 Carbon in running for £1 million global environmental award

## Electrostatic Direct Air Capture (DAC) technology experts bidding to make a difference in fight against climate change

An Irish company pioneering affordable and accessible climate change technology is in the running for a prestigious £1 million global environmental grant award.

Waterford-based NEG8 Carbon <https://neg8carbon.com/> has been nominated by the London-based Chartered Institute of Patent Attorneys for The Earthshot Prize 2025. The coveted global award recognises and rewards pioneering work to tackle our planet's most urgent environmental issues.

Founded by Prince William in 2020, The Earthshot Prize was inspired by US President John F. Kennedy's 'Moonshot' initiative in the 1960s, which aimed to achieve the seemingly impossible goal of landing a man on the moon within a decade. The Earthshot Prize adapts this ethos to inspire efforts to repair the planet by 2030.

NEG8 Carbon was nominated

for its Electrostatic Direct Air Capture (DAC) technology that demonstrates significant advancement in lowering the costs of DAC.

This progress translates into better carbon capture effectiveness and scalability, paving the way for widespread DAC adoption to remove excess carbon dioxide (CO<sub>2</sub>) from the atmosphere to reverse climate change.

Electrostatic DAC works by drawing in air and passing it over a specifically designed sorbent system that attracts and captures CO<sub>2</sub>. The captured CO<sub>2</sub> can then be permanently and safely stored underground or converted into climate-neutral carbon products, such as Sustainable Aviation Fuel (SAF).

Ray Naughton, Co-founder, and Managing Director of NEG8 Carbon said: "To be nominated for The Earthshot Prize is a profound honour and it highlights the potential of our technology to make

a difference in the fight against climate change.

"This recognition motivates us to push forward with our mission to make DAC affordable and accessible.

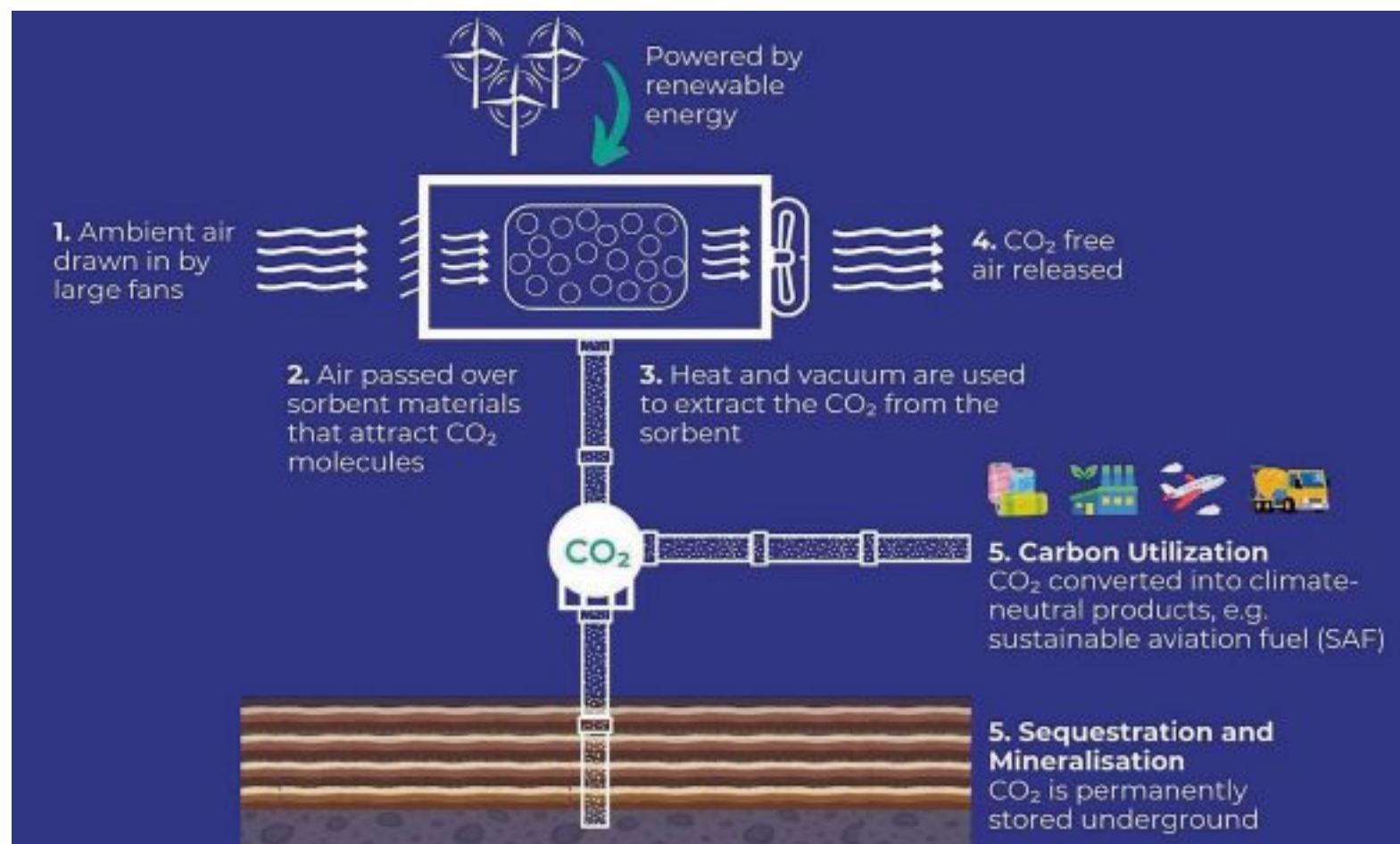
This is also a testimony to the NEG8 Carbon team which has worked hard to take Electrostatic DAC from concept to demo scale in a short space of time." Each year, the prize is awarded to five winners who show meaningful impact across five key areas called 'Earthshots': Protect and Restore Nature; Clean our Air; Revive our Oceans; Build a Waste-Free World and Fix our Climate. The winners receive a £1 million grant to further develop their projects, along with global visibility and support from a network of experts.

The winners will be announced later in the year.

For more on NEG8 Carbon, visit <https://neg8carbon.com/>



Ray Naughton MD & Founder of NEG8 Carbon.





# Sustain-FIT programme launched to strengthen Ireland's research capabilities

**Brendan Keane**

Enterprise Ireland recently announced the launch of the Sustain-FIT Programme (2025-2029) which is a transformative initiative designed to strengthen Ireland's sustainability and digitalisation research capabilities.

However, the initiative has a dual purpose as it will also help address the urgent need for climate action.

Co-funded by Enterprise Ireland and the European Union under Horizon Europe, the €15 million programme will recruit 50 postdoctoral researchers from across the world to collaborate with Irish companies on innovative sustainability-focused research projects.

The first call for applications opens in this month, offering 25 Marie Skłodowska-Curie Fellowships. There will be a second call for applications in the Autumn for the remaining fellowships.

Commenting on the initiative, Minister for Enterprise, Tourism and Employment, Peter Burke said the programme represents "a significant step forward" in terms of Ireland's climate ambitions.

He said it will offer businesses: "An unprecedented opportunity to lead the way in sustainability and digital transformation through research and innovation."

"This programme will position Ireland as a hub for industrially focused sustainability research while contributing to global climate solutions," said Minister Burke.

He also said it will build on the



excellent research and innovation programmes delivered by Enterprise Ireland that ensure the adaptability of Irish companies.

"Government is committed to supporting research and innovation across all sectors and recognises the important part it plays in Ireland's ability to successfully address the digitalisation and climate transitions," he said.

Meanwhile, Kevin Sherry, Executive Director at Enterprise Ireland, said: "Sustain-FIT is a unique initiative that demon-

strates Ireland's commitment to advancing sustainability research while fostering strong academic-industry partnerships."

"By attracting exceptional global talent, we are equipping Irish enterprises with the expertise needed to tackle climate challenges and drive sustainable innovation," he said. The aim of the Sustain-FIT is to enable participating researchers to work closely with an Irish Higher Education Institution (HEI) or Research Performing Organisation (RPO) and a partner company, to deliver impactful three-

year projects

. Researchers will also complete a six to 12 month secondment within the partner company, gaining valuable first-hand exposure to industry processes while driving meaningful sustainability initiatives.

Enterprise Ireland has created a dedicated portal where Irish companies including those in Waterford can advertise their interest in hosting researchers, giving businesses of all sizes a chance to attract world-class talent and benefit from fresh, innovative ideas.

## Driving the European Green Deal in Ireland

The Sustain-FIT programme aligns with the European Green Deal, which sets out ambitious sustainability objectives across key areas such as clean energy, sustainable mobility, biodiversity, and climate neutrality. Researchers are encouraged to focus their projects on these pillars, as well as digitalisation initiatives that support Green Deal goals.

## Opportunities for Researchers and Companies

In term of those who can apply to the programme, for potential researchers, applicants must have resided outside Ireland or have been in the country for no longer than 12 months prior to the call deadline. They will benefit from comprehensive training, academic supervision, and industry mentorship to build enterprise-focused sustainability skills.

With regard to companies, eligible Irish enterprises of all sizes can host researchers to inject new talent, drive innovation, and gain competitive advantage in sustainability and digitalisation.

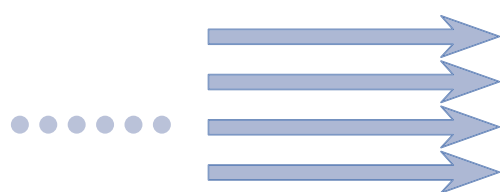
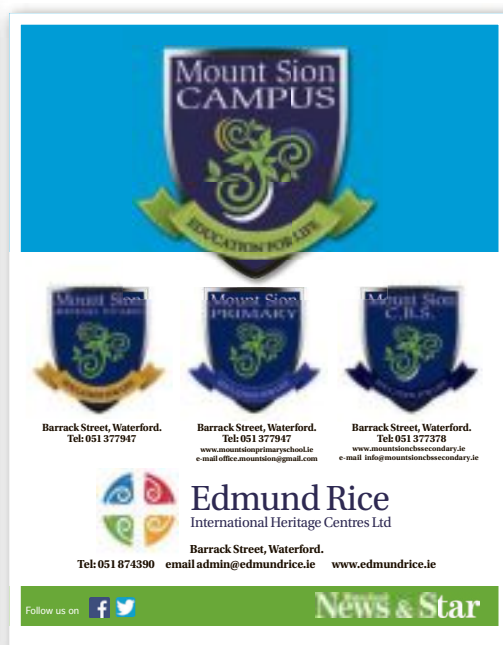
It's expected the first round of fellowships will be announced in the Summer with the second call for the remaining fellowships taking place in the Autumn. Throughout the three-year programme, researchers will showcase their projects' outcomes at regular events, fostering collaboration within the Sustain-FIT cohort and helping to build a new cadre of sustainability research experts in Ireland.





# Show your company, school or club in the best light

with a supplement produced by **Waterford News & Star**



Our dedicated sales team, journalists and photographers work with you to produce a supplement to showcase everything you have to offer.

For further information on our range of supplement options, contact us on 051 875566